

SPECIAL FEATURES

- IDEAL FOR PRESSURE TRANSMITTER
- LASER WELDED DIAPHRAGM
- ONE PIECE AISI 316 SS CONSTRUCTION
- FLUSH DIAPHRAGM

APPLICATIONS

DIAPHRAGM SEALS ARE PROVIDED IN THE INSTRUMENTS LIKE PRESSURE GAUGES, SWITCHES, TRANSMITTERS IN ORDER TO ISOLATE THE SENSING ELEMENT FROM THE MAIN SERVICE DUE TO ITS CORROSIVE, VISCOUS AND SEDIMENTED NATURE AND TO AVOID CLOGGING AND SOLIDIFICATION.



SPECIFICATIONS

STANDARD VERSION

(COMPATIBLE WAAREE MODELS : AD (NS 63 mm) & AL (NS 100 mm))

Note: Pressure Gauge will be provided maximum to NS 100 mm with internal system of NS 63 mm.

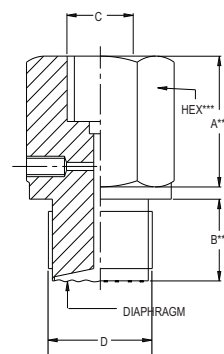
Range	: Refer below table
Process Temperature	: -40°C to 200°C or as per fill fluid
Instrument Connection	: 1/4" BSP (F)
Process Connection	: 3/4" BSP (M)
Mounting	: Direct (Without capillary)

Diaphragm	: AISI 316L SS
Body	: AISI 316 SS
Fill Fluid	: Silicon Oil - DC 200

PROCESS CONNECTION & RANGE SELECTION TABLE

Thread Size	1/2" BSP (M)	3/4" BSP (M)	1" BSP (M)	1 1/2" BSP (M)	2" BSP (M)
Code	WU	WF	WW	WX	WB
Thread Size	1/2" NPT (M)	3/4" NPT (M)	1" NPT (M)	1 1/2" NPT (M)	2" NPT (M)
Code	WA	XB	XC	XD	XE
Ranges (bar)					
4	X	X	X	X	✓
6	X	X	X	✓	✓
10	X	X	X	✓	✓
16	X	X	✓	✓	✓
25	X	✓	✓	✓	✓
40	✓	✓	✓	✓	✓
60	✓	✓	✓	✓	✓
100	✓	✓	✓	✓	✓
160	✓	✓	✓	✓	✓
200	✓	✓	✓	✓	✓
250	✓	✓	✓	✓	✓
400	✓	✓	✓	✓	✓
600	✓	✓	✓	✓	✓

DIMENSIONS - STANDARD VERSION



A***	B**	C	D*	HEX***	Approx. Wt.#
18	20	1/4" BSP(F)	3/4" BSP(M)	32	500.0

(# Weight in grams with box for Standard Model.)

HOW TO ORDER

		Example
BASIC MODEL		
CODE		DF
OPTIONAL EXTRAS		
BODY		
CL AISI 316 SS (Standard)	CM AISI 316L SS	XX
DIAPHRAGM		
UJ AISI 316L SS (Standard)		XX
INSTRUMENT CONNECTION		
VN 1/4" BSP (F) (Standard)	VP 3/8" BSP (F)	XX
VO 1/4" NPT (F)	VM 1/2" NPT (F)	
PROCESS CONNECTION		
WU 1/2" BSP (M)	WW 1" BSP (M)	XX
WA 1/2" NPT (M)	XC 1" NPT (M)	
WX 1 1/2" BSP (M)	XD 1 1/2" NPT (M)	
WB 2" BSP (M)	XE 2" NPT (M)	
WF 3/4" BSP (M) (Standard)	XB 3/4" NPT (M)	
FILLING FLUIDS (* Consult factory for specifications, price and delivery)		
US FLUROLUBE 4.2 [-45 to 175 °C]	UY SILICON DC 704 [10 to 337 °C]	XX
UT FLUROLUBE 6.3 [-40 to 235 °C]	UZ SILICON DC 710 [7 to 371 °C]	
UU FLUROLUBE FS-5 [-28 to 148 °C]	VA SYLTHERM 800 [-40 to 315 °C]	
UV FOOD GRADE OIL [-20 to 140 °C]	VB SYLTHERM XLT [-100 to 260 °C]	
UX SILICON DC 200 [-40 to 205 °C] (Standard)	VC HALOCARBON OIL*	
OTHER OPTIONS		
TB HELIUM LEAK TEST	TC DRY SEAL ONLY WITHOUT INSTRUMENT	XX
	GH MATERIAL TEST CERTIFICATES*	

* MATERIAL TEST CERTIFICATES WILL BE PROVIDED FOR WETTED PARTS ONLY WITH CHEMICAL COMPOSITION TESTING. FOR OTHERS, PLEASE CONSULT FACTORY.

NOTE: FOR MOC LIKE MONEL, HASTELLOY-C ETC. , PLEASE CONTACT FACTORY FOR PRICE AND DELIVERY.

Ordering Example : DF - XX - XX - XX - XX - XX - XX

FOR OTHER OPTIONAL ITEMS, PLEASE CONTACT FACTORY FOR DELIVERY AND MINIMUM QUANTITY OF ORDER.

Note : Specifications and dimensions given in this product catalogue represents the state of engineering at the time of printing.
Modifications may take place and materials specified may be replaced by others without prior notice.