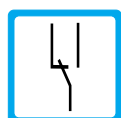
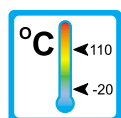


## SPKM

### Operation

The flow monitors type SPKM are paddle switches with magnetic triggering of a micro switch.



### Application

The flow monitors type SPKM are used for monitoring volumeflow of liquid media in pipe constructions and open ducts.

Areas of application:

- Coolingsystems and cooling-circuits
- Heating and air-conditioning systems
- Research and development

### Features

The SPKM series proves itself through reliable function and easy handling. The electrical and the wetted part are hermetically separated.

Further characteristics of this sturdy type are:

- low sensitivity to dirt
- high repeatability
- low pressure drop
- easy switchpoint adjustment
- high contact rating
- threaded connection

### Installation hints

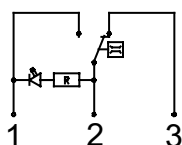
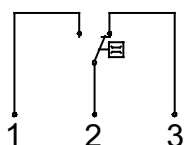
The flow monitor can be installed horizontally or vertically in the system. The instrument must not be installed upside down. The flow direction must be observed.

Flow-straightening sections of at least 5x the pipe diameter should be considered up- and down-stream of the SPKM. The switchpoint must be re-adjusted for vertical installation to compensate the paddle weight. The flow monitor must not be used as a supporting part in a pipe construction!

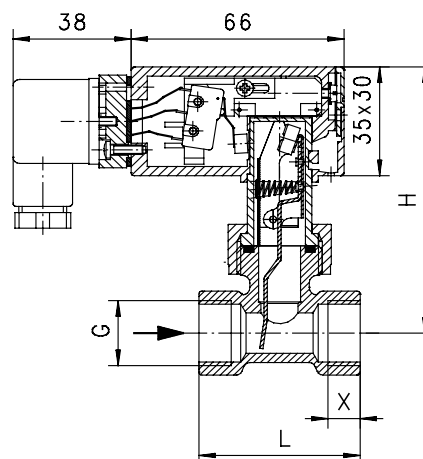


# Measuring Ranges, Technical Data

## Connection diagram



optional: with LED red



## SPKM

### Summary of types SPKM

Type	Switch range* (H <sub>2</sub> O) [l/min]	Qmax. (H <sub>2</sub> O) [l/min]	DN	G	PN [bar]	H [mm]	L [mm]	X [mm]	Weight Brass [kg]	Weight Stainless Steel [kg]
SPKM-10	4 — 5,5	10	10	3/8"	25	87	50	10	0,35	0,40
SPKM-15	5,5 — 7	20	15	1/2"	25	87	50	10	0,35	0,41
SPKM-20	7,5 — 10	40	20	3/4"	25	88	50	12	0,35	0,35
SPKM-25	14 — 18	60	25	1"	25	92	50	12	0,40	0,45
SPKM-32	22 — 30	80	32	1 1/4"	25	96	50	12	0,55	0,55
SPKM-40	37 — 50	100	40	1 1/2"	25	99	50	12	0,60	0,70
SPKM-50	67 — 93	150	50	2"	25	108	50	12	1,00	1,00

\*The stated values are switch-off points for horizontal installation. Measuring ranges for other flow media on request!

Operating data	SPKM	
Operating pressure max. Brass-Version:	25 bar	
Operating pressure max. Stainless Steel-Version:	25 bar	
Average pressure drop at Qmax.:	0,01 bar	
Maximum temperature:	110 °C	
Measuring accuracy:	±15% of full scale	
Hysteresis:	Depending on switch value, at least 0,7 l/min	
Electrical data:		
Change over:	max. 250 V AC • 5 A	
Ingress protection:	IP65 (plug connection DIN 43650 Form A)	
Output signal:	The contact changes, when the flow falls below the set point.	
Power supply:	Not required (micro switch)	
Status indication (optional):	LED red (refer to connection diagram)	
Gold contact (optional):	125 V AC / 30 V DC • 100 mA	
Other plug types on request!		
Material:	Brass-Version	Stainless Steel-Version
Housing (wetted part):	MS 58 nickel-plated	1.4305
Body (wetted part):	MS 58	1.4571
Paddle parts (wetted part):	1.4301 ; 1.4571	1.4301 ; 1.4571
Spring (wetted part):	1.4310	1.4310
Magnet (wetted part):	Oxyd 300	Oxyd 300
Gasket (wetted part):	NBR	Viton

Please indicate flow direction, flow medium and switch range with your order!



**TR Automatyka Sp. z o. o.**  
ul. Lechicka 14 ; 02-156 Warszawa

Tel. (+48 022) 886 10 16  
Fax. (+48 022) 846 50 37

[www.trautomatyka.pl](http://www.trautomatyka.pl)  
[biuro@trautomatyka.pl](mailto:biuro@trautomatyka.pl)